



Beaufort County Public Works Stormwater Infrastructure Project Summary

Project Summary: Lost Island Road

Activity: Routine/Preventive Maintenance

Narrative Description of Project:

Duration: 12/2/15 - 2/11/16

Project improved 3,994 L.F. of drainage system. Cleaned out 3,720 L.F. of valley drain and 820 L.F. of roadside ditch.
Jetted (1) crossline pipe, (11) driveway pipes and 274 L.F. of roadside pipe. Installed rip rap for erosion control.

2016-537 / Lost Island Road	Labor Hours	Labor Cost	Equipment Cost	Material Cost	Contractor Cost	Indirect Labor	Total Cost
AUDIT / Audit Project	0.5	\$11.75	\$0.00	\$0.00	\$0.00	\$6.62	\$18.36
CLPJT / Crossline Pipe - Jetted	20.0	\$457.60	\$86.80	\$52.88	\$0.00	\$297.00	\$894.28
COVD / Cleaned Out Valley Drains	49.0	\$1,081.99	\$113.20	\$28.60	\$0.00	\$669.33	\$1,893.12
HAUL / Hauling	30.0	\$692.40	\$239.70	\$446.91	\$0.00	\$453.10	\$1,832.11
ONJV / Onsite Job Visit	17.0	\$570.77	\$60.18	\$30.40	\$0.00	\$397.27	\$1,058.62
PI / Project Inspection	2.0	\$40.92	\$3.54	\$2.86	\$0.00	\$25.44	\$72.76
PRRECON / Project Reconnaissance	2.0	\$64.93	\$3.54	\$3.04	\$0.00	\$42.70	\$114.21
RSDCL / Roadside Ditch - Cleanout	80.0	\$1,755.90	\$255.87	\$68.34	\$0.00	\$1,075.50	\$3,155.61
UTLOC / Utility locates	1.0	\$24.70	\$0.00	\$0.00	\$0.00	\$13.23	\$37.93
2016-537 / Lost Island Road Sub Total	201.5	\$4,700.96	\$762.83	\$633.04	\$0.00	\$2,980.19	\$9,077.01
 Grand Total	201.5	\$4,700.96	\$762.83	\$633.04	\$0.00	\$2,980.19	\$9,077.01

Before

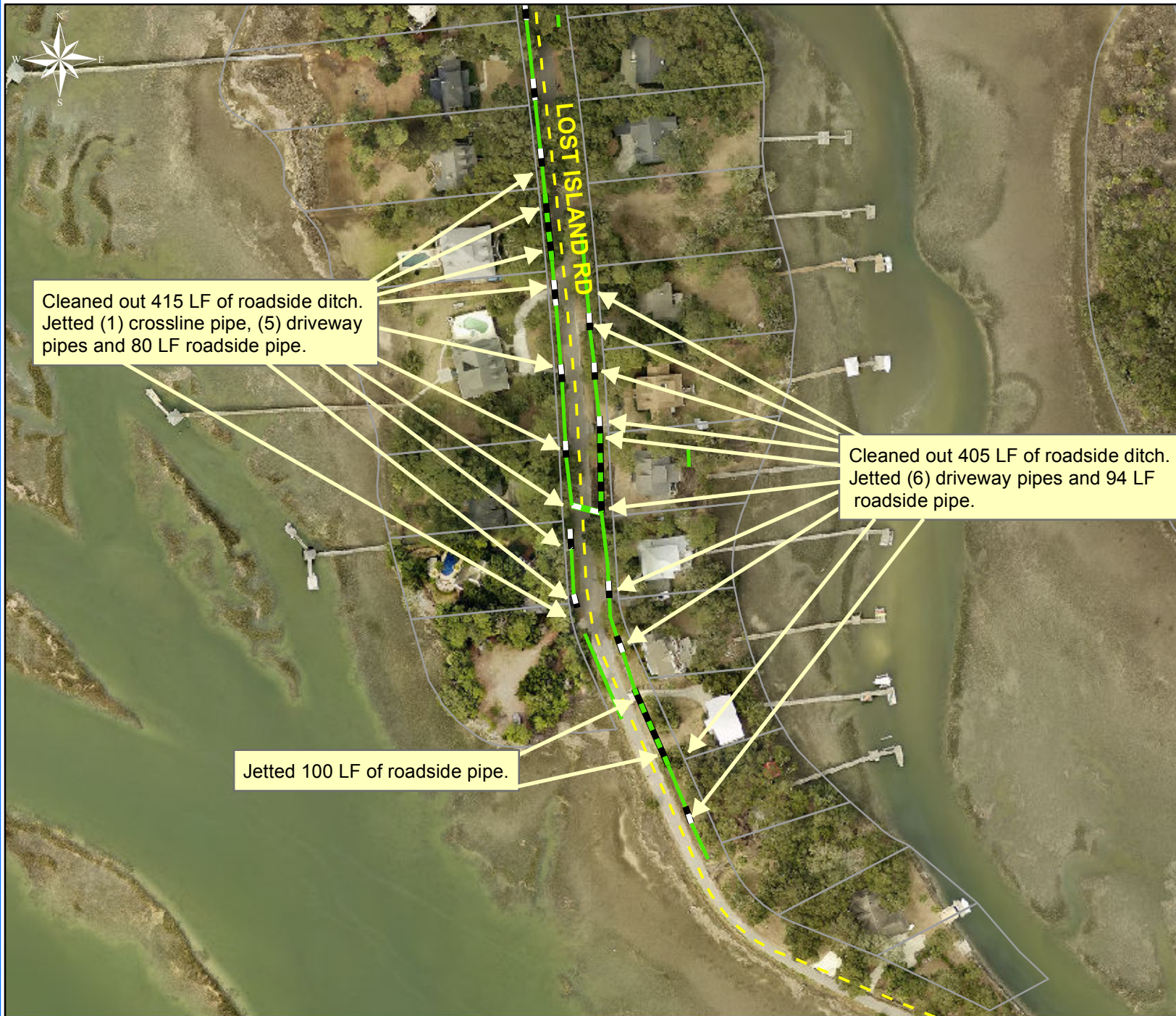


During



After





Project: Lost Island
Map 1

Activity: Routine/
Preventive
Maintenance

Project #:
2016-537

Township/SW Dist:
Ladys Island/7

Completed:
February 2016

Legend

Drainage Type

- Access Pipe
- Bleeder Pipe
- Channel Pipe
- Channel
- Stream
- Crossline Pipe
- Driveway Pipe
- Lateral
- Lateral Pipe
- River
- Road Pipe
- Roadside
- Roadside Pipe

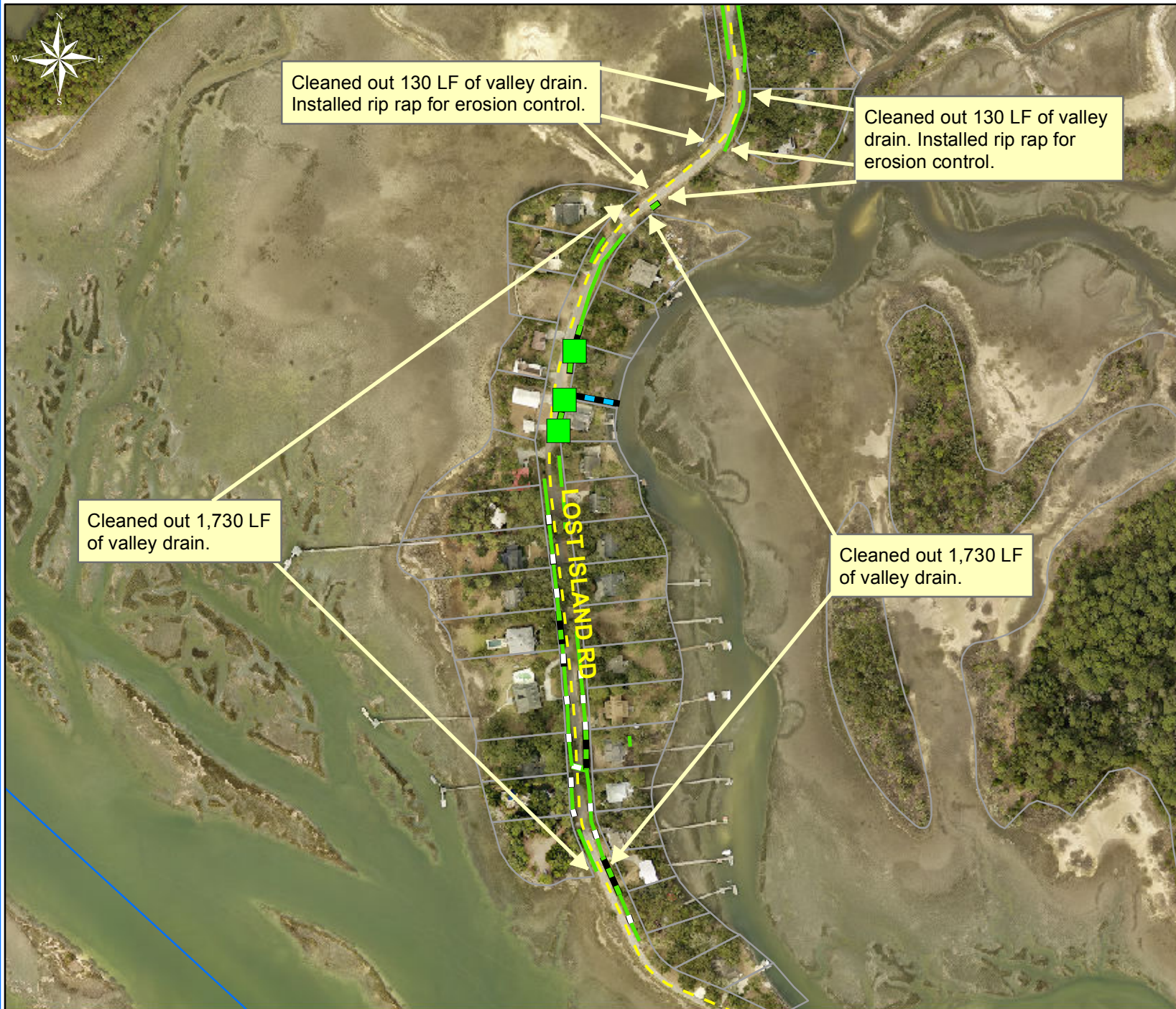
0 40 80 160 240 320
Feet

1 inch = 170 feet

Prepared By: BC Stormwater Management Utility

Date Print: 04/14/16

File: C:\project summaries map\Lost Island Map1_2016-578



Project: Lost
Island
Map 2

Activity: Routine/
Preventive
Maintenance

Project #:
2016-537

Township/SW Dist:
Ladys Isalnd/7

Completed:
February 2016

Legend

Drainage Type

- Access Pipe
- Bleeder Pipe
- Channel Pipe
- Channel
- Stream
- Crossline Pipe
- Driveway Pipe
- Lateral
- Lateral Pipe
- River
- Road Pipe
- Roadside
- Roadside Pipe

0 80 160 320 480 640
Feet

1 inch = 330 feet

Prepared By: BC Stormwater Management Utility

Date Print: 04/14/16

File: C:\project summaries map\Lost Island Map2_2016-578